



MILTON  
RHODES  
CENTER  
FOR THE  
ARTS

**Innovative spaces  
for any event.**



# WHERE INNOVATIVE EVENTS COME ALIVE

Located in the heart of downtown Winston-Salem, the Milton Rhodes Center for the Arts is a new, elegant, multi-purpose event facility designed with innovation at its core. We can arrange anything you need from corporate events and parties, fundraisers and press events to private parties, galas and weddings. Your imagination is the only limit.

Our experienced staff makes it easier than ever to make your vision a reality. You work with an experienced events manager and an on-site technical director who assist you from start to finish to make your occasion memorable.

The Milton Rhodes Center for the Arts offers multiple unique spaces within the building, from the F. Borden Hanes Jr. Conference Room and the beautiful, naturally-lit Reynolds Place to a fully-functional and state-of-the-art Hanesbrands Theatre. Imagine it, and we'll help produce it.



# MAIN ENTRANCE & WOMBLE CARLYLE GALLERY

Artist Kyungmi Shin's lyrical abstract lines of glass mosaic tiles inlaid in the entrance lobby floor welcome guests with undeniable "wow" effect. The Wake Forest Baptist Health Lobby, leading into the Womble Carlyle Gallery, Hanes Conference Room and Reynolds Place, is perfect for receptions or as a hub for surrounding activity.

Just off the lobby, the Womble Carlyle Gallery presents a unique and sophisticated setting for cocktail receptions and special events. The floor is part of the original Sawtooth building, and the art exhibited inside is constantly changing.



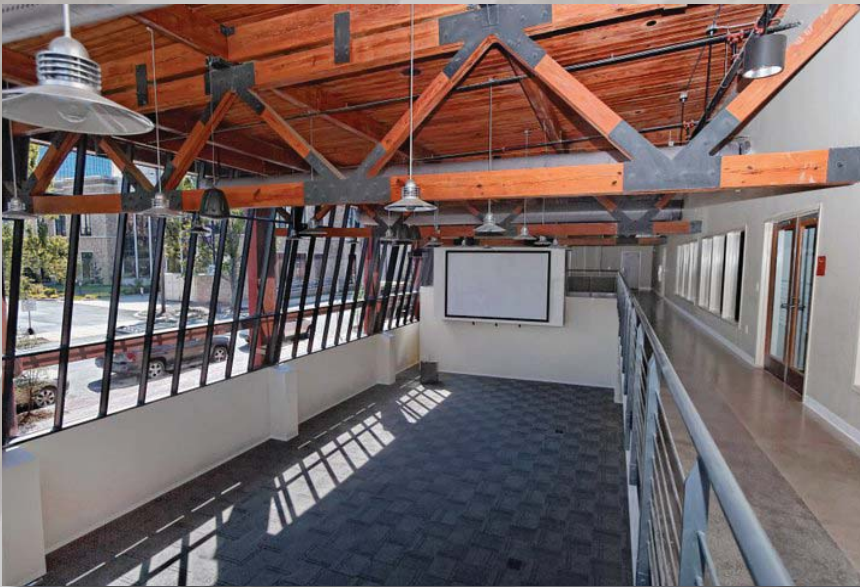
	Lobby	Womble Carlyle Gallery
Size	988 sq. ft.	1800 sq. ft.
Capacity*	100	250
Rate	\$100/hr	\$100/hr
Minimums		
8 a.m. - 4 p.m.	2-hr	2-hr
4 p.m. & later	4-hr	4-hr

\*Reception Only

# REYNOLDS PLACE

A beautiful and unique venue, the 3,300-square-foot Reynolds Place features a Romeo and Juliet-inspired balcony and wrap-around mezzanine. Its 30-foot ceilings, supported by exposed wooden beams and its enormous plate glass windows, provides wonderful natural light throughout. With a king-sized projection screen and cutting edge audio/video equipment, the venue can be tailored to almost any event.

Audio/visual equipment is available for rent. Full food and drink service is permitted by approved caterers.



Size	3,300 sq. ft.	
Capacity	200 banquet	400 reception
	120 conference	420 theatre
Rate	\$175/hr	
Minimums	2-hr (8 a.m. - 4 p.m.)	
	4-hr (4 p.m. & later)	

# MOUNTCASTLE FORUM

The Mountcastle forum on the second floor of the Milton Rhodes Center for the Arts has large windows that overlook Reynolds Place, allowing natural light to permeate the space. The large room is versatile enough to facilitate anything from a meeting or conference to a banquet or party and includes black theatrical curtains to provide optional privacy for meetings and presentations or intimate cocktail parties

Selected audio equipment is available for rent, and a projection screen is available (no projector included). Full food and drink service is permitted by approved caterers.



Size	3,200 sq. ft.	
Capacity	170 banquet	300 reception
	120 conference	300 theatre
Rate	\$150/hr	
Minimums	2-hr (8 a.m. - 4 p.m.)	
	4-hr (4 p.m. & later)	

# F. BORDEN HANES JR. CONFERENCE ROOM

The F. Borden Hanes Jr. Conference Room is an ideal conference meeting space with exceptional features. In addition to exceeding your basic needs for setting up a meeting, this room provides you a truly memorable visual experience with works of art from the Hanes collection.

The Hanes Conference Room is equipped with high performance audio and video for meetings and conferences. Food and beverage are permitted.



Size	720 ft <sup>2</sup>
Capacity	80 reception 50 conference/lecture
Rate	\$80/hr
Minimums	1-hr

# CAFÉ & EXCALIBUR TERRACE

The Café and attached Excalibur Terrace serve as a great area for an informal meeting, supplying light snacks and refreshments as well as seating by the Center's Grand Staircase. The Café can also be used for bar service at a wedding or special event, with the Excalibur Terrace serving as a relaxing place outdoors.

The Café is open daily with light snacks and beverages available for purchase and can supply snack service to any event space in the Center. Music is allowed throughout the Café and Excalibur Terrace.



Size	Cafe and Excalibur Terrace 620 ft <sup>2</sup>
Capacity	45 reception
Rate	\$100/hr
Minimums	2-hr (8 a.m. - 4 p.m.) 4-hr (4 p.m. and later)

# HANESBRANDS LOBBY & DUKE ENERGY CONFERENCE ROOM

The lobby to the Hanesbrands Theatre is as unique as the theatre itself. It showcases an impressive large-scale mural based on the concept of cymatics by nationally recognized artist Jimmy O'Neal.

Off the lobby is the glass-enclosed Duke Energy Conference Room, suitable for small meetings or receptions with a lot of style.

Both areas allow for bar/hors d'oeuvre service with included catering prep and consession sales areas. Music is allowed.

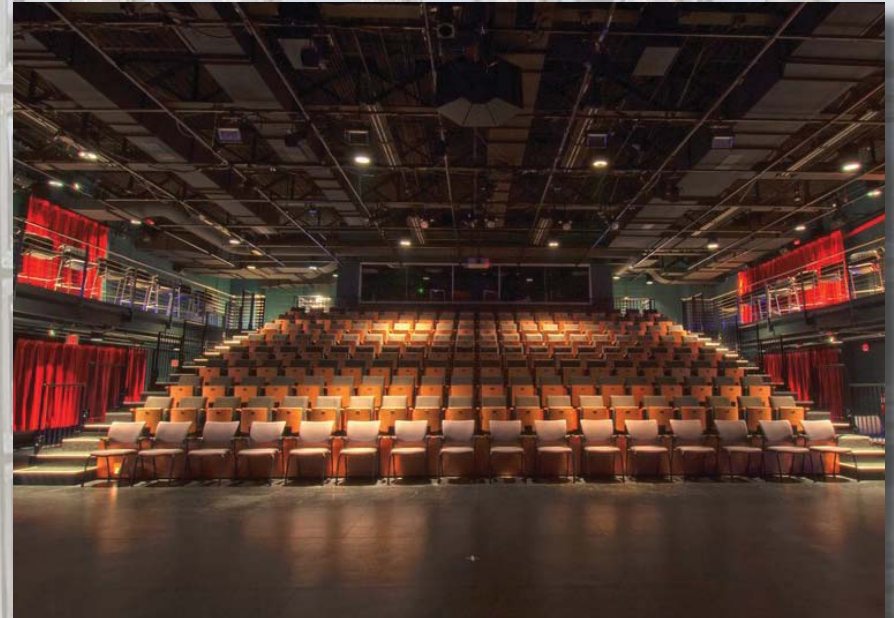


Capacity	200 reception
Rate	\$150/hr
Minimums	2-hr (8 am. - 4 p.m.)
	4-hr (4 p.m. and later)

# HANESbrands THEATRE

The possibilities for the Hanesbrands Theatre are limited only by your imagination. Retractable theatre seating can be stowed to maximize floor space for alternate arrangements. Historic metal fire doors in the theatre feature commissioned artwork by Hieronymous and Anne Kesler Shields.

Full theatre production is available; costs are quoted by requirements. Food and beverage service is allowed. The theatre's resident companies, Festival Stage of Winston-Salem, Winston-Salem Festival Ballet, No Rules Theatre Company and Piedmont Opera present an average of 33 weeks of programming a year, so available dates are limited.



Size	2,500 sq. ft. with retractable seats.
	3,400 sq. ft. without retractable seats
Capacity	300 seated, flexible formations
Rates	
Weekday (Sun.-Thurs.)	\$800 (\$600 non-profit) / day
Weekend (Fri. & Sat.)	\$2,000 (\$1,600 non-profit) / day

# COME VISIT!

**Directions:** From Business Highway 40, take the Broad Street Exit and head north. Take a right on Fourth Street. Take a right on Spruce Street. Go one block. The Milton Rhodes Center for the Arts is located on the left at 251 North Spruce Street.

**Parking:** Metered parking for 145 cars is located on Spruce Street across from the Center. Additional parking is located within one to two blocks from the Center.

**Hours of Operation:** The Milton Rhodes Center for the Arts is open to the public 9 a.m. to 9 p.m. Monday through Friday and 9 a.m. to 4 p.m. on Saturday. Events and performances may be scheduled outside these hours.

**Accessibility:** The Center strives to be accessible to all visitors. If you have a question or suggestion about accessibility, contact us at 336-725-8916. Free ADA compliant parking is available across from the building on Spruce Street. Curb cuts are located at the Spruce Street entrance. Two elevators are situated in the main areas of the building and in Hanesbrands Theatre. Accessible restrooms are located throughout the Center. Service animals are welcome. Braille is on all directional signs and elevators. Drinking fountains are located throughout the building. First aid assistance is available at the front desk.

**Performances and Tickets:** The Milton Rhodes Center for the Arts and Hanesbrands Theatre are home to several professional performance groups in dance and drama and host many other events throughout the year. See a schedule of events at [www.HanesbrandsTheatre.org](http://www.HanesbrandsTheatre.org). Events at Hanesbrands Theatre may require tickets. Contact the Center for more information: 336-747-1414.

**Other Attractions:** Winston-Salem hosts more than 1,500 events each year. Come explore our City of Arts & Innovation at [CityOfTheArts.com](http://CityOfTheArts.com).

# CONTACT US

## Event Booking & Management

Hope Mabe  
251 N. Spruce St.  
Winston-Salem, NC 27101  
(336) 747-1429  
[hmabe@intothearts.org](mailto:hmabe@intothearts.org)

## Performance Booking, Hanesbrands Theatre

Richard Emmett  
305 West 4th St.  
Winston-Salem, NC 27101  
(336) 722-2585 ext. 1111  
[remmett@intothearts.org](mailto:remmett@intothearts.org)

## Box Office, Hanesbrands Theatre

Jerry Word  
209 N. Spruce St.  
Winston-Salem, NC 27101  
(336) 747-1414  
[boxoffice@intothearts.org](mailto:boxoffice@intothearts.org)

## Womble Carlyle Gallery

Dara Silver  
305 W. 4th St.  
Winston-Salem, NC 27101  
(336) 722-2585 ext. 1121  
[dsilver@intothearts.org](mailto:dsilver@intothearts.org)

**PLEASE NOTE:** *Rental rates are subject to change without notice. All rentals are governed by policies and procedures outlined by the Milton Rhodes Center for the Arts. No event spaces will be held without deposit. For more information, please contact the appropriate representative listed above.*

*We look forward to working with you to make your dreams a reality.*

MILTON RHODES CENTER ARTS

251 N. Spruce Street  
Winston-Salem, NC 27101



[RhodesArtsCenter.org](http://RhodesArtsCenter.org)

Like us on Facebook.

Follow us on Twitter:  
[@MiltonRhodesCen](https://twitter.com/MiltonRhodesCen)